

Three Family House with Garage Parking on Oversized Lot

\$ 1,999,999



479 Manila Ave, Jersey City, NJ 07302

- » Beds: 8 | Baths: 5 Full
- » MLS #: 180004360
- » Multi-Family | Lot: 3,250 ft²
- » Great location, close to Newport and Downtown Path
- » Corner property, three family home with good rent roll
- » More Info: 479ManilaAve.IsForSale.com

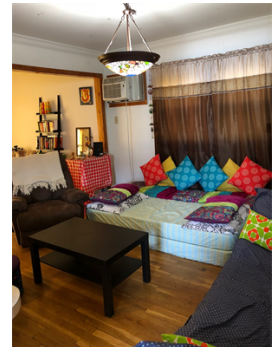
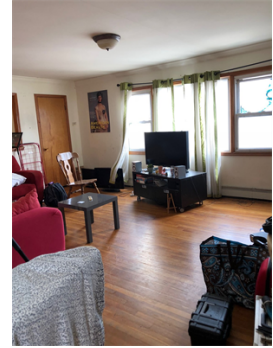


Lucy Liu

(201) 694-5335 (cell)
(201) 946-2700 (office)
(201) 946-0707 (fax)
lucy@lucycliu.com
www.lucycliu.com



eRealty Advisors Inc.
777 Westchester Avenue, Suite 101
White Plains, NY 10604
(201) 946-2700



Corner building on an over sized lot on Manila Ave. Legal three family with two car garage and two outdoor parking spots. Units have hardwood floor and tiled kitchen and bathroom. Great rent roll, can be higher. Great investment. Close to path, mall and Hamilton Park.

